



# Area 98 Aranda – Cook Newsletter November 2009

## Neighbourhood Watch

“Neighbours working together to promote a sense of well being, safety and security”

Serving Aranda, north-east Cook & Jamison since 1986

Zone:  
Your Zone Leader Is:

### Coming Events

#### Friends of Aranda Bushland

Please watch for details of the December workparty posted on notices around the bushland. We will be holding a number of casual workparties throughout the late December/early January period to control the St. John's Wort and welcome offers of help.

Please ring 6251 1345 if you are able to help.

#### Friends of Mt Painter

Friends of Mt Painter will be holding its next work party on Saturday, 14 November, from 9.00am to 12 noon. We will be weeding and making and installing tree guards in the vicinity of the water tanks.

Come to the water tanks and follow the signs from there. More details from Sarah at [hnatiuk1@cyberone.com.au](mailto:hnatiuk1@cyberone.com.au); or phone 6251 2228 or 0424 263 565. Or look at the new noticeboard near the entrance to the reserve off Booth Crescent.

#### Aranda Residents Group

The **2009 Annual General Meeting** of the Aranda Residents' Group Incorporated will be held on Monday 30th November 2009, at 18 Banambila Street Aranda, meeting to start at 8 PM.

All Aranda residents and those with connections to Aranda are invited to attend.

The usual AGM format will be followed. In addition, current issues of interest are:

- proposed landscape works associated with the Gunghalin Drive Extension;
- the condition of the Aranda Shops site.

An RSVP for the AGM would be much appreciated by the current ARG President, Victoria Grounds, so could you please email your response to:

[info@clearcomfort.com.au](mailto:info@clearcomfort.com.au)

*Does your organisation have an event or activity that you would like to include in this newsletter? Just contact the Editor on [aranda.cook.nhw@gmail.com](mailto:aranda.cook.nhw@gmail.com).*

### Garbage and Recycling



#### RECYCLING

<b>Aranda:</b>	19 November 3 December 17 December
<b>Cook:</b>	26 November 10 December 24 December

Bins should be placed out 7am.

Inquiries phone Cleanaway on 6260 1472 for recycling or 6260 1547 for garbage.

**Second Hand Sunday** – The next event will be held on November 29 from 9am to 3pm. Registrations will be open from November 9 and will close on November 24 at 5pm. Registration will be via the website or through Canberra Connect 13 22 81. Visit the website at: [www.tams.act.gov.au/secondhandsunday](http://www.tams.act.gov.au/secondhandsunday)

**Waste Tip: Used Clothing** – If you have been going through your wardrobes and closets and have clothes you no longer wear but are good enough to pass on, there are a number of options,

- Sell the items at your next garage sale or take up a stall at the Jamison markets.
- Take the clothes to the back of the Salvation Army Store off Lawry Place (remember to only take your items there during business hours, leaving things there after hours is an offence).
- Place your clothes in the Anglicare bins in the Anglican Church car park off Redfern Street.
- Take the items to another one of the charity drop off locations listed at [http://www.tams.act.gov.au/live/Recycling\\_and\\_Waste/Recycling\\_Options\\_in\\_the\\_ACT/charities](http://www.tams.act.gov.au/live/Recycling_and_Waste/Recycling_Options_in_the_ACT/charities)
- Wait until the next Second Hand Sunday and leave the clothes out for collection then.

Take only those clothes that are resalable, if your items are not good enough to sell you can take the rags to Canberra Rag Supply, Shop 3 at Scullin Shops.

**Curves NEW WEIGHT MANAGEMENT PLAN**

No elaborate point systems or eliminating foods, just simple solutions to help you eat better, lose weight and keep it off for good.

OPEN TO MEMBERS AND NON-MEMBERS  
FREE CLASSES BEGIN SOON - CALL CLUB FOR DETAILS

Curves.com  
[ OVER 10,000 LOCATIONS WORLDWIDE ]

6251 1111  
BELCONNEN  
SHOP 2 AUSTRALIA POST  
JAMISON CENTRE, MACQUARIE

### Heart Foundation Walking Groups

The Heart Foundation has a number of walking groups around the ACT, including some in the Belconnen area. The closest group, the Lake Ginninderra Nomads, meet on Monday, Wednesday and Friday at 10:00am for a one hour medium paced walk. If you are interested in joining the group phone Ted on 0402 107 495. If you would prefer to walk with a group closer to home perhaps you could consider starting one in Aranda or Cook. The Heart Foundation Walking is keen to encourage other walking groups and is looking for Area Coordinators and Walk Organisers. An introductory kit is available to help publicise and set up a group, so if you are interested contact the foundation on 1300 36 27 87.

### Nine to Face Court after Scullin Drug Operation

ACT Policing will summons eight people to court on drugs charges and have arrested a ninth for alleged drug trafficking after an operation in Scullin on the afternoon of 29 October.

The operation focussed on the alleged distribution of MDMA and cannabis from a Scullin residence, and resulted in the seizure of approximately 1350 pills suspected to be MDMA, five grams of white powder suspected to be cocaine and approximately 115 grams of cannabis.

During the operation, police witnessed a number of alleged drug transactions occurring at a Scullin residence and nearby shops. Police then searched a vehicle being used during the alleged transactions, locating an amount of cannabis.

A search warrant was subsequently executed on the Scullin premises with drug team detectives locating drugs and a number of electrical items suspected to be stolen.

The resident of the house, a 30-year-old man, was arrested and charged with traffic in controlled drug, traffic in cannabis and possess prohibited substance and will appear before the ACT Magistrates Court this morning.

A further eight people will be summonsed to appear at a later date on charges relating to the possession of cannabis, cocaine and MDMA.

### Your Local Agent

If you are thinking of selling or would just like an update on the Market situation, please contact me for an obligation free appraisal - I am only five minutes away.



#### Marie King

Tel: 6251 9111  
Mob: 0411 793 937  
mk@bel.peterblackshaw.com.au

**PETER BLACKSHAW**  
MARKETING QUALITY PROPERTY



### Protect Your Car from Theft

One of the items that often appear on the "Crime Statistics" list is vehicle theft. Unfortunately car thefts in the ACT have risen over the past year and the territory theft rate per head of population and registration remained above the national average for the year 2008/09.



To decrease the chance of your car being stolen and reduce the opportunity for crime the AFP has the following advice.

- Always lock doors and close windows completely when your vehicle is unattended. Even a small gap can allow a window to be forced.
- Park your car in the street and use an area that is well lit at night.
- Choose secure car parks wherever possible; ones that are well lit and have boom gates and never leave your ticket in the car.
- If you must leave valuables in your car, make sure they are locked away out of sight.
- Spare keys should never be hidden in or on the car.
- If you have a garage, use it rather than leave your car in the driveway or on the street and ensure that you lock it as well as your car.
- Remove cheque books, credit cards, driver's licence and registration papers from the glove box
- Record serial numbers of valuables and details of your car such as make, model and engine number.
- Engrave or mark your property with your driver's licence number preceded by 'A' for the ACT. Also mark your licence number on several places in the car.
- When your car is being repaired leave only the ignition key.
- Avoid placing your name, address and registration number on keys.
- Take your car keys with you or hide them when you leave your car at home unattended.
- Take note of strangers showing an interest in your car.
- Lockable fuel caps will help prevent not only your petrol being stolen but will force joy riders to abandon you car when fuel runs out.

Remember if your car takes more than a few seconds to break into thieves will usually not bother, so reduce the risk. Time spent identifying your property and securing your car is worth it. A number of anti-theft device are currently available to help you secure your car which include:

- engine immobiliser;
- ignition shield;
- fuel cut-out switch,
- ultrasonic motion sensor (detects movement inside the car);
- glass etching (Vehicle Identity Number) on motor vehicle;
- glass break detector;
- high powered electronic noise maker and standby power unit;
- battery isolator ;
- steering wheel lock;
- hand brake lock;

- transmission lock; and
- wheel lock.

**Motor vehicle theft can be reduced with a few precautions and greater community awareness.**

### Do you qualify for a free engine Immobiliser?


#### Car theft is inconvenient and costly.

The ACT Government is currently subsidising the cost of car engine immobilisers to ACT residents who own a pre 2001 vehicle.

Students and people with a health care card or pension card may qualify for a full subsidy for the installation of an engine immobiliser in their vehicle. Other residents may also qualify for a subsidy of \$100 (approximately 50%) towards the cost of immobiliser installation.

An immobiliser protects your car by temporarily interrupting the power supply to the fuel pump, the starter motor, and/or the ignition. Without power to these systems, your vehicle cannot start. The immobiliser is fitted by an authorised installer and is a short process, which will generally take less than a day.


**To obtain a voucher or find out more about the scheme call Canberra Connect on 13 22 81.**



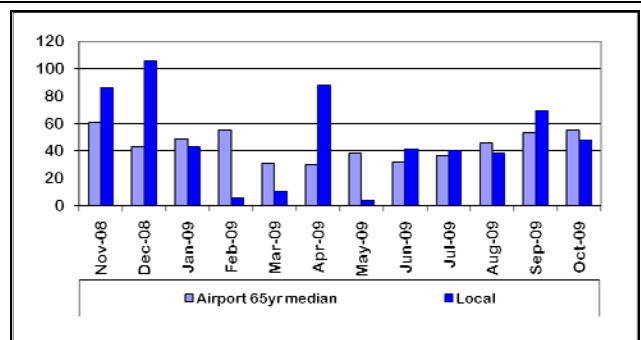
**JAMISON TRAVEL**

Meet your local travel agents    Shop 5, 39 Bowman Street  
Produce this ad and get 10%    Macquarie ACT 2614  
discount on travel insurance    (next to the Salvos Store)

T: 02 6251 5166  
E: [michelle@jamisontravel.com.au](mailto:michelle@jamisontravel.com.au)  
Licenced Agent No: 18800120



### Water Matters



Although we had some excellent rainfall over the month, we were still down on the 65 year median. Our rainfall total for the calendar year 2009 is now 394.7 mm over 83 days: more than the previous three years, however lower than the totals for 2004 and 2005.

Our recorders collected the following:

- Dexter St, Cook - 49.0 and 47.8mm;
- Mirning Cr, Aranda - 50mm;
- Noala St, Aranda - 43mm; and
- Bindaga St, Aranda - 48.4mm.

Dam levels rose to 53.29%.

**ST VINCENT'S PRIMARY**  
 Bindel Street, Aranda  
**YOUR LOCAL CATHOLIC**  
**SCHOOL**  
 Come and see us!  
 Open to everyone who wishes to  
 share Christian values.  
 We are a *small* school with a *BIG*  
 smile  
 Ph: 62512442  
[www.svdp.cg.catholic.edu.au](http://www.svdp.cg.catholic.edu.au)  
 Principal: John Vance

**European Wasps**

As the weather gets warmer and we start to spend more time outside, enjoying a barbeque, picnic or even a refreshing drink we need to be aware of the dangers posed by the European wasp. This pest has spread through Canaberra's suburbs since it was first recorded here in 1984. Its nesting, foraging habits, and the abundance of food has ensured that it thrives in our area. Unfortunately this means that the wasp constantly comes in contact with people.

**If Stung.** The European wasp, unlike a bee is able to inflict a painful sting repeatedly which, depending on the severity, may requiring medical treatment. If you have been stung the skin becomes hot, red and swollen. The pain may be quite severe and last for several hours but usually subsides after a day, becoming itchy for a few more days. Using an ice pack and an anaesthetic spray should help reduce the pain and swelling.

If you have a major allergic reaction you may experience an itchy rash distant from the stung area, tightness of the throat and difficulty in breathing or swallowing. Should you experience any swelling

around the mouth or throat medical assistance must be obtained immediately.

**Appearance.** The wasps are similar in size to a bee and are bright yellow and black, with bright yellow legs. They are mostly black on their front with bright yellow markings, and bright yellow on their back with black stripes and black dots between the stripes down each side of the abdomen (sometimes joining the stripes).



**Nests.** The wasps nests are always concealed, often underground but may be rockeries, tree stumps or in the walls and cavities of your home. You may find the nest by looking out for a constant stream of wasps flying to and from a particular location. If the wasps nest is on your land it is your responsibility to have it removed. Parks, Conservation and Lands recommend that you call a pest control company to exterminate the problem nest. However if you decide to do it yourself you must have protective clothing and equipment. The best time to exterminate a nest is early in the morning or late in the afternoon; these times will ensure the majority of the wasps will be in the nest. Be aware that the wasps are fiercely protective and the nests may contain thousands of insects.

**PTS**  
**PROFESSIONAL**  
**TILING**  
**SERVICES**  
 Commercial & Domestic  
 Tiling and Waterproofing  
 Proudly Supporting  
 Neighbourhood Watch  
 In Aranda - Cook

**Contact Details**

Emergency (Police, Fire Ambulance): 000  
 Police Attendance: 131 444  
 Crime Stoppers 1800 333 000  
 ACT NHW: //www.nhwact.com.au  
 NHW Area 98 Coordinator: Vacant  
 email: [aranda.cook.nhw@gmail.com](mailto:aranda.cook.nhw@gmail.com)  
 Newspaper Editor: Boerge Alexander tel